



# DUSD QUICK FACTS

A QUICK REFERENCE TO THE DUBLIN UNIFIED SCHOOL DISTRICT

DUSD | 7471 LARKDALE AVE. | DUBLIN, CA 94568-1500 | 925-828-2551 | WWW.DUBLINUSD.ORG

## ABOUT DUBLIN

Dublin is a suburban city in the East (San Francisco) Bay Area and Tri-Valley regions of Alameda County, California. The city, with a population of approximately 61,000, is located along the north side of the Interstate 580/680 intersection.

## HIGHLIGHTS

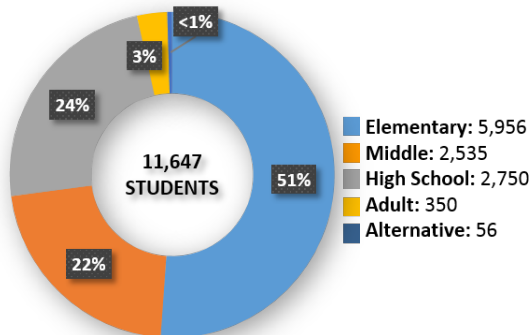
The Dublin Unified School District (DUSD) serves over 11,500 students, from preschool through adult education, in a diverse suburban environment. The district has 11 school sites, with a 12<sup>th</sup> opening in August 2018. The DUSD mission is to ensure that every student becomes a lifelong learner by providing a rigorous and relevant 21st century education that builds resilience and prepares them for college and career or service to our country and for success in the global economy.

The Dublin Unified School District was recently ranked as one of the "Top 100 Best School Districts in California." DUSD ranked 32 out of over 750 state school districts.<sup>1</sup>

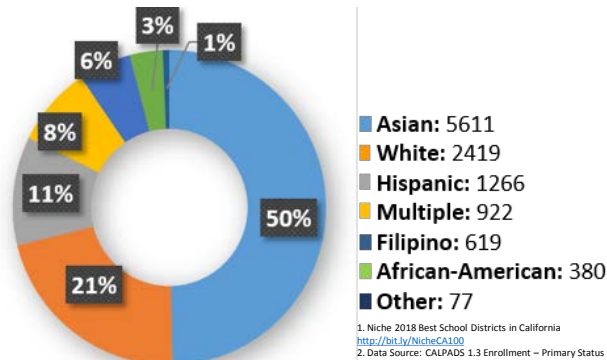
Dublin schools have been recognized with numerous accolades, including Advanced Placement Honor Roll, National Blue Ribbon School, Gold Ribbon Award, Project Lead The Way Distinguished School, California School of Character, National School of Character, California Distinguished School, and Title 1 Academic Achievement Award School.

Dublin High School is renowned for its signature programs, including the Engineering Academy, which prepares students to succeed in a post-secondary engineering program; the Biomedical Academy, which prepares students for a post-secondary education in biomedical sciences; and the Culinary Academy which prepares students for a post-secondary education in the culinary arts.

## ENROLLMENT<sup>2</sup>

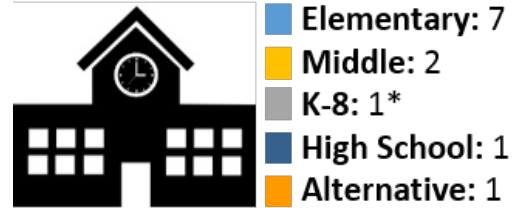


## ETHNICITY<sup>2,3</sup>



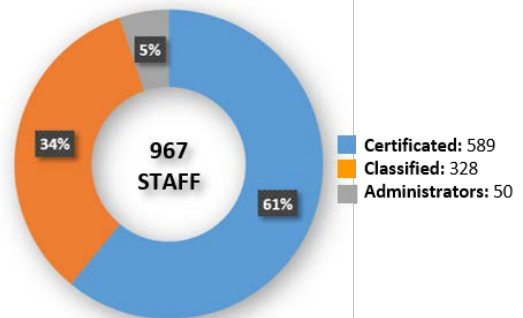
1. Niche 2018 Best School Districts in California <http://bit.ly/NicheCA100>  
 2. Data Source: CALPADS 1.3 Enrollment - Primary Status Disaggregated Fall 1 Reporting October  
 3. Adult education students not factored into Ethnicity statistics

## SCHOOL TYPES

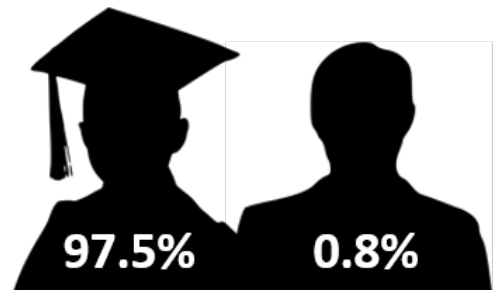


\*Opens August 2018

## PERSONNEL



## GRADUATION/DROPOUT RATE



## AVERAGE ATTENDANCE RATE

Elementary	96.61%
Middle	97.21%
High	96.62%
Alternative	81.53%
<b>TOTAL</b>	<b>96.54%</b>

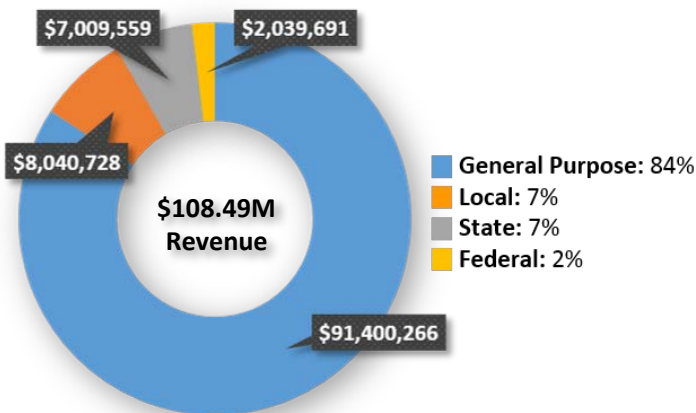


# DUSD QUICK FACTS

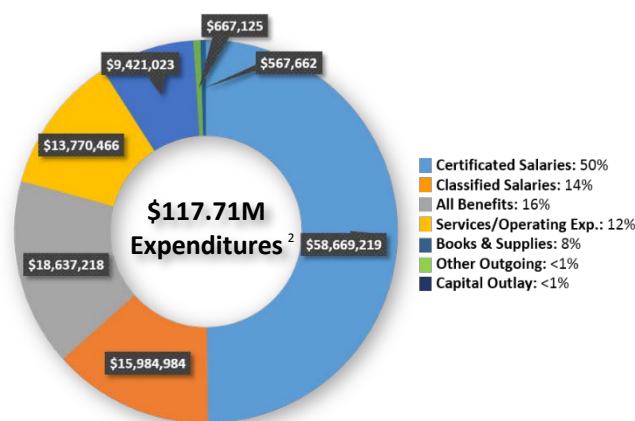
A QUICK REFERENCE TO THE DUBLIN UNIFIED SCHOOL DISTRICT

DUSD | 7471 LARKDALE AVE. | DUBLIN, CA 94568-1500 | 925-828-2551 | WWW.DUBLINUSD.ORG

## REVENUE<sup>1</sup>



## EXPENDITURES<sup>1</sup>



## NUTRITION



- Breakfast Served: 92,160<sup>3</sup>
- Lunches Served: 444,960<sup>3</sup>
- Percent Receiving Free/Reduced Meals: 10%

## TECHNOLOGY



- Devices Deployed in District: 11,600+
- WIFI Access Points: 530+
- Google Drive Files Shared Internally: 2.5 Million

## BOND MEASURES C, E & H

Through Bond Measures C & E, the Dublin Unified School District has invested over \$240 million in new sites, campus improvement, technology and other projects. Dublin citizens approved Measure H in 2016 to fund further construction projects and campus improvements district-wide.

<sup>1</sup> 2017-2018 2nd Interim Budget

<sup>2</sup> 2017-2018 Expenditures exceeding budget are covered by nearly \$10M in carryover from the 2016-2017 school year

<sup>3</sup> 2017-2018 Projections

## ELEMENTARY SCHOOLS

- Amador Elementary  
Holly Scroggins: 925-307-1950
- Dougherty Elementary  
Joy Inouye-Scarpinato\*: 925-803-4444
- Dublin Elementary  
Lauren McGovern: 925-833-1204
- Frederiksen Elementary  
Claire Mognaga: 925-828-1037
- Green Elementary  
Lorianne Ventura: 925-833-4200
- Kolb Elementary  
Joyce Gibson: 925-551-4000
- Murray Elementary  
Meghan Boriskin\*: 925-828-2568

K-8

- Cottonwood Creek (Opening August 2018)  
Brett Nelson: 925-833-3333

## MIDDLE SCHOOLS

- Fallon Middle School  
Sheri Sweeney: 925-875-9376
- Wells Middle School  
Ean Ainsworth: 925-828-6227

## HIGH SCHOOLS

- Dublin High  
Maureen Byrne: 925-833-3300
- Valley High  
Megan Pettis: 925-829-4322

\*Starting 2018-2019 school year

## DUSD LEADERSHIP

### Board of Trustees

- Amy Miller, President
- Dan Cherrier, Vice President
- Dan Cunningham
- Megan Rouse
- Joe Giannini
- Brian Anderson, Student Representative

### Superintendent & Cabinet

- Dr. Leslie Boozer, Superintendent
- Mark McCoy, Asst. Superintendent, Human Resources
- Joe Sorrera, Asst. Superintendent, Business Services
- Dr. Lisa Gonzales, Asst. Superintendent, Educational Services (incl. instruction, curriculum, assessment, technology, and special education)